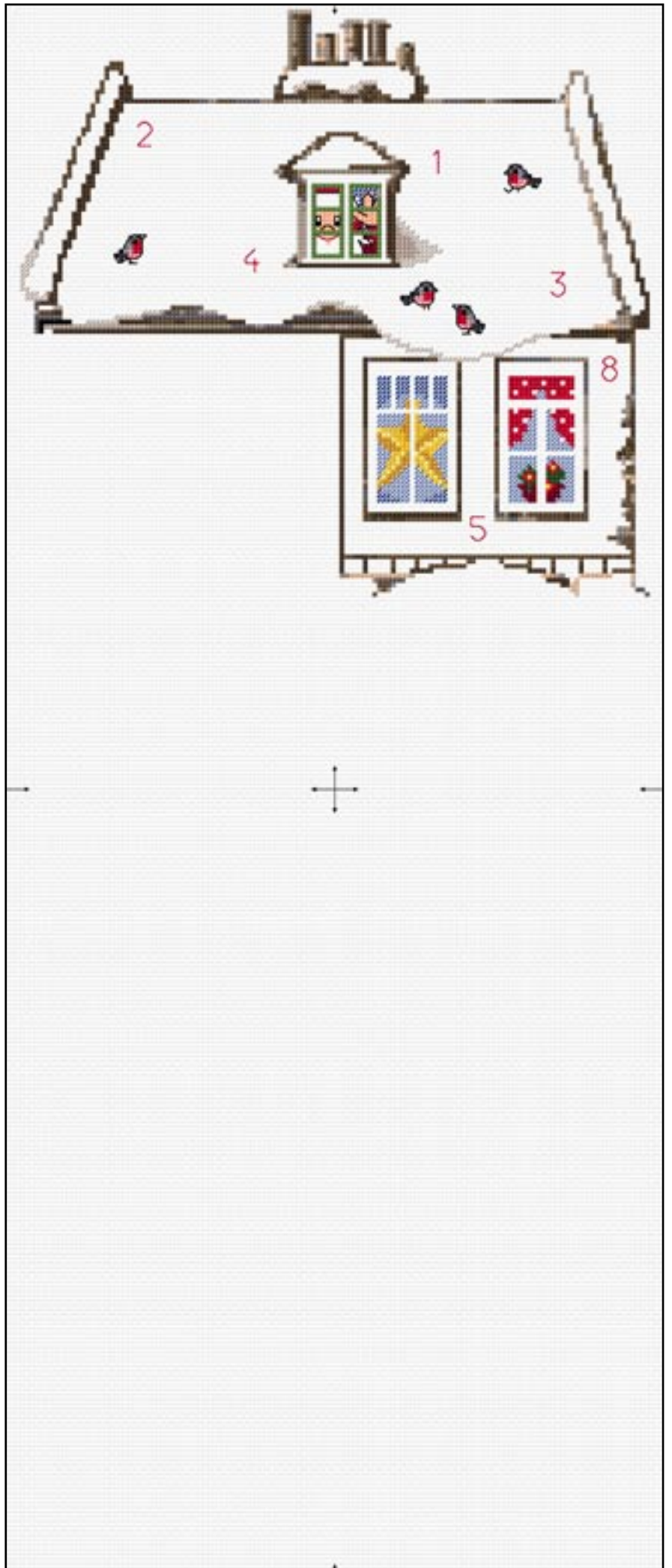




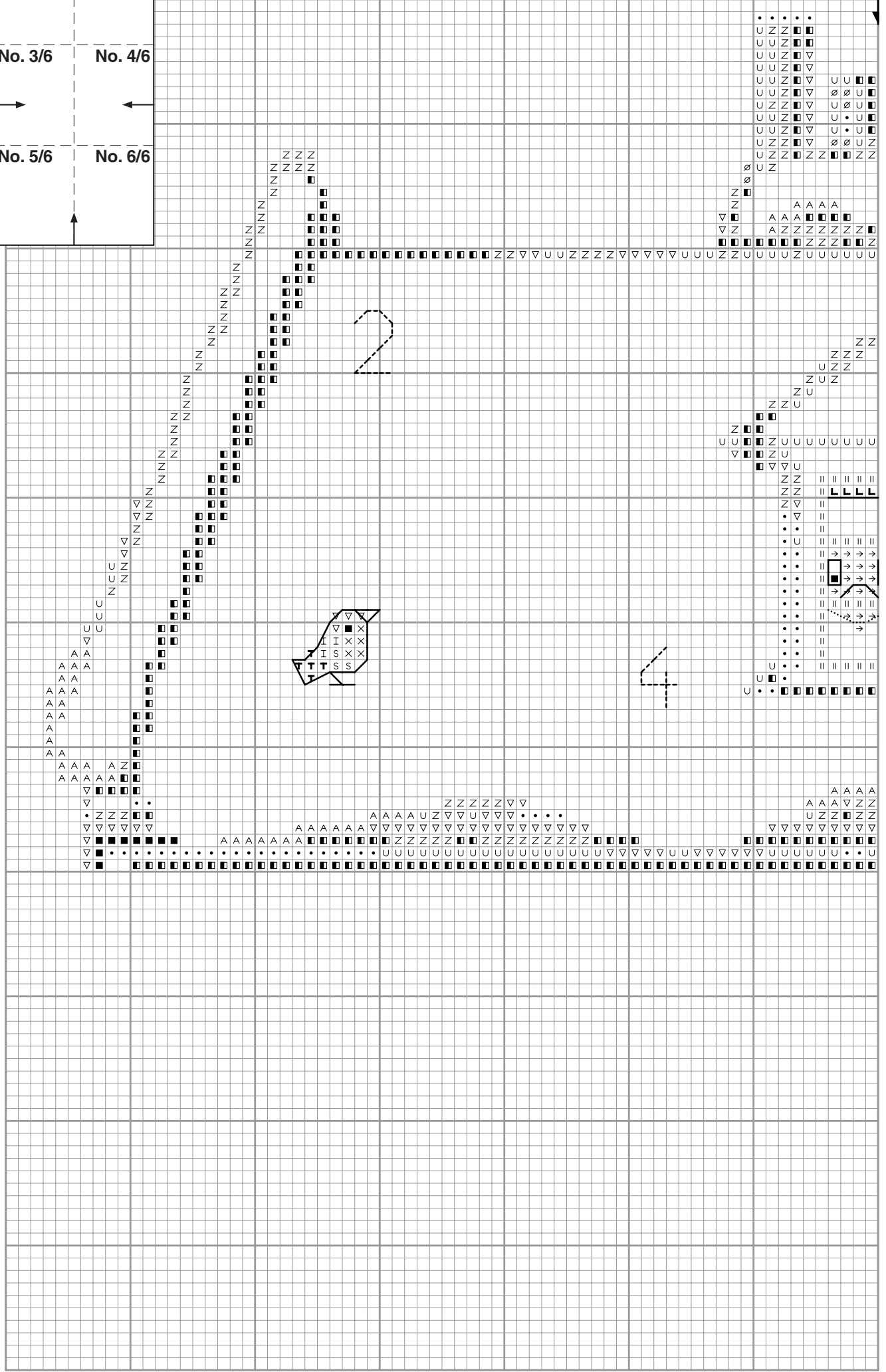
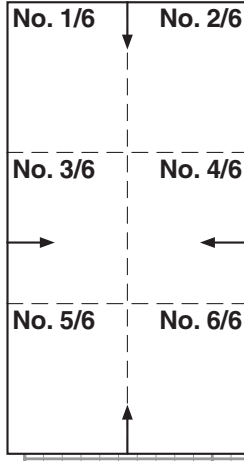
34-9699/Part 3

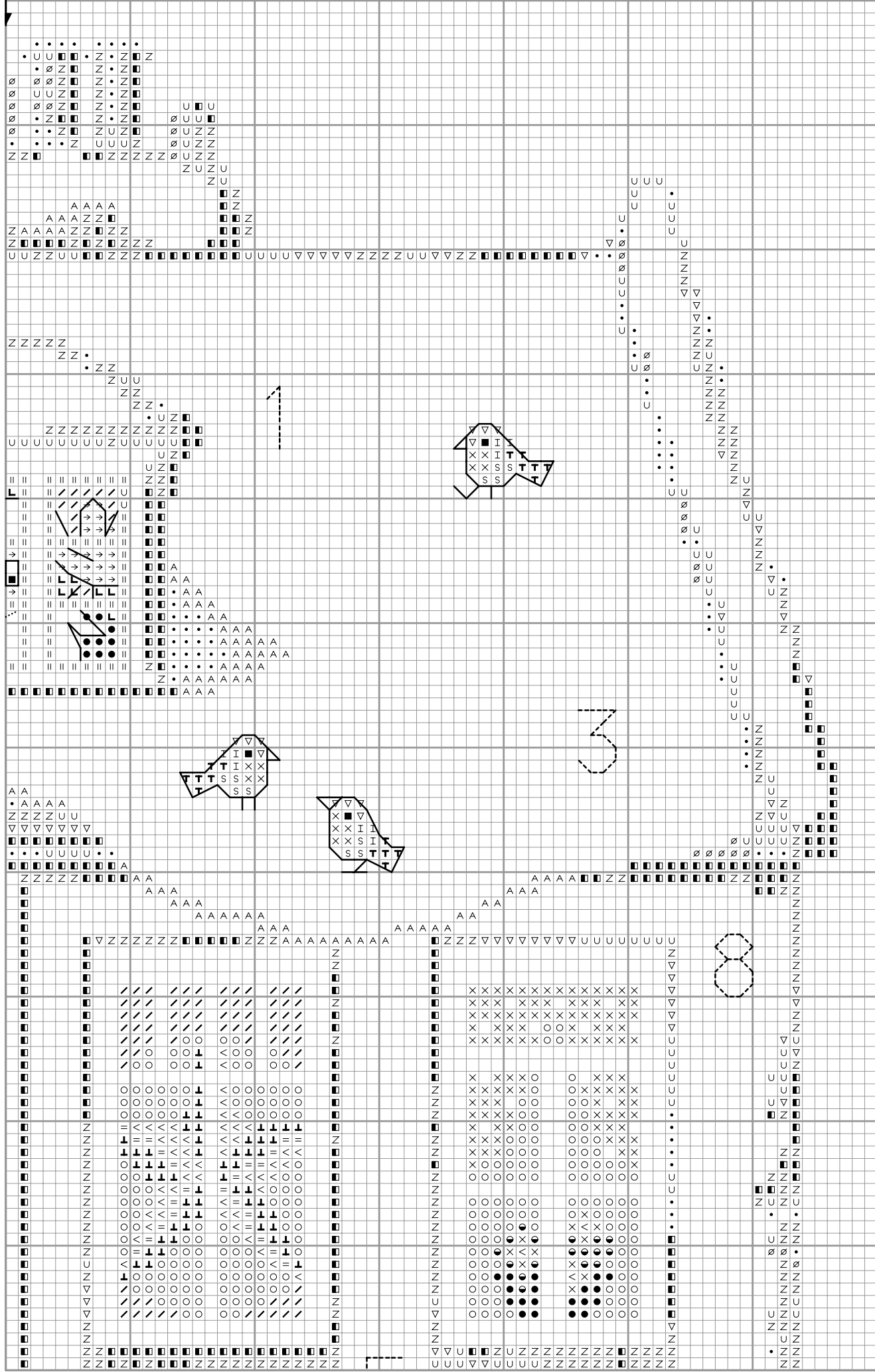


SECRET STITCH ALONG



34-9699 / Part 3 No. 1/6



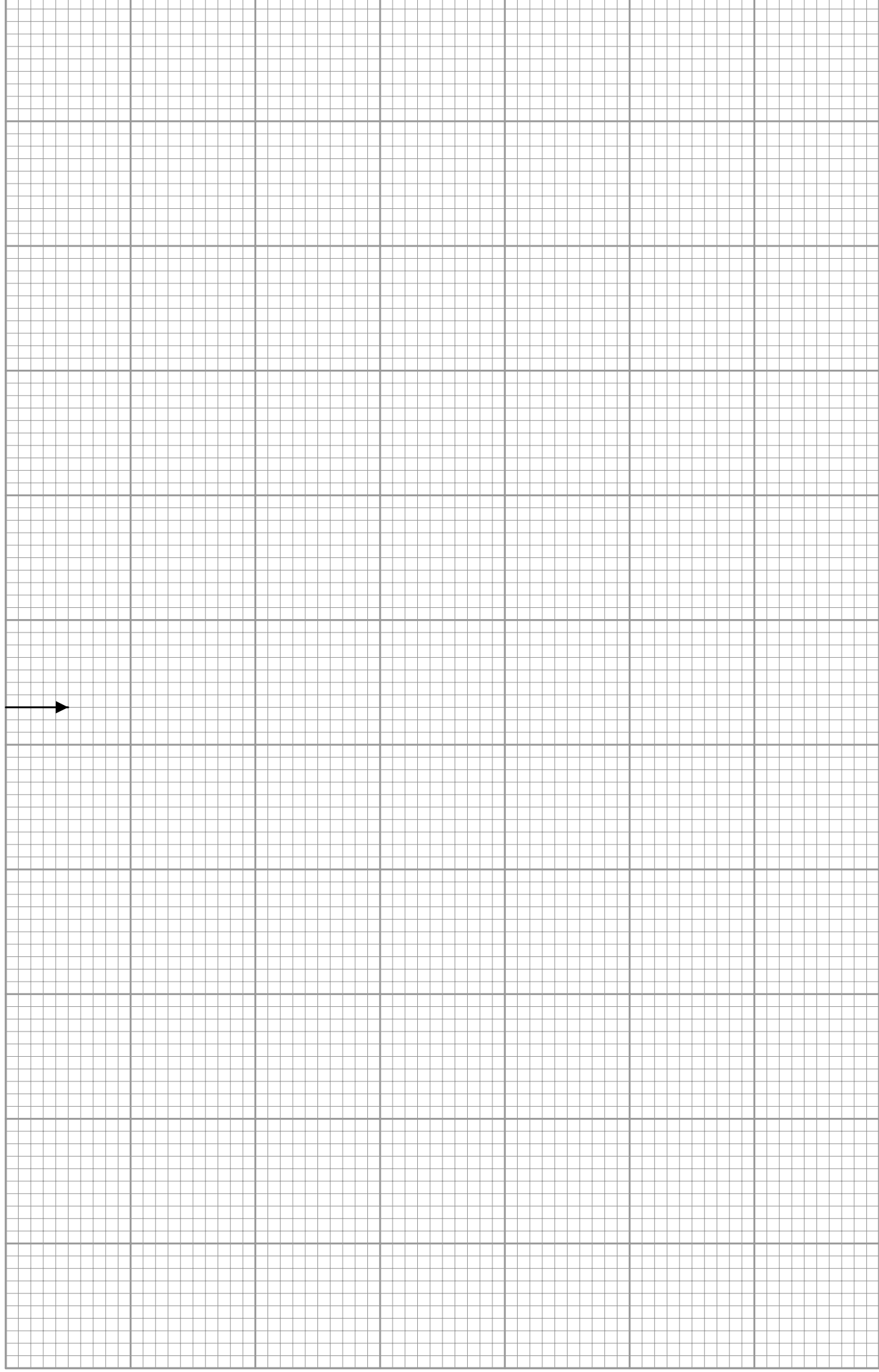


SECRET STITCH ALONG

PERMIN
Scandinavian art needlework



34-9699 / Part 3 No. 3/6



SECRET STITCH ALONG



34-9699 / Part 3 No. 4/6

The grid contains a needlework pattern diagram. The symbols used are:

- Z**: Represents a specific stitch.
- U**: Represents another stitch.
- Ø**: Represents a third stitch.
- : Represents a dot or a specific point.
- △**: Represents a triangle or a specific point.

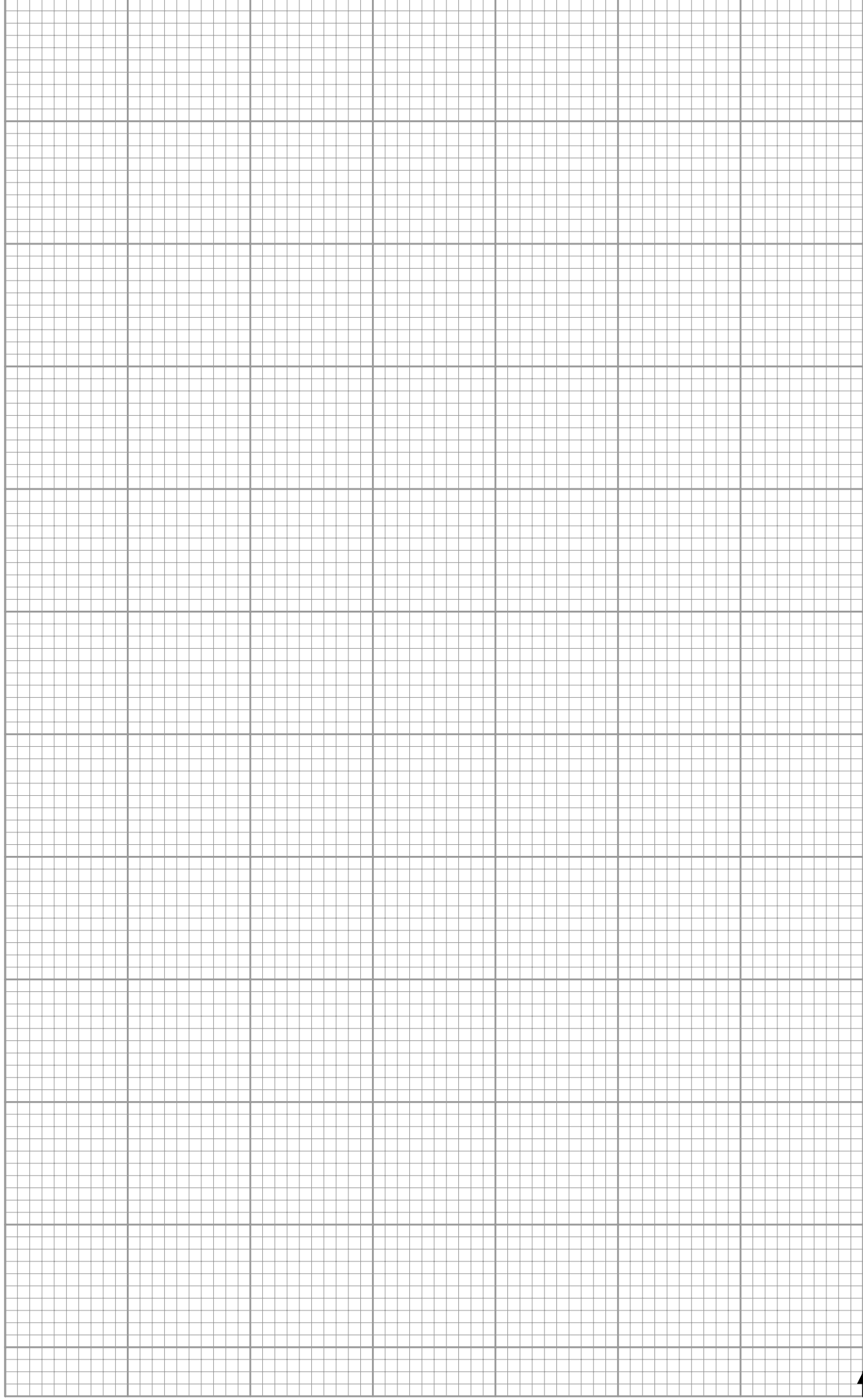
A dashed line at the top center forms a shape resembling the letter 'D'. An arrow on the right side points to the right. The bottom portion of the grid is empty.

SECRET STITCH ALONG

PERMIN
Scandinavian art needlework



34-9699 / Part 3 No. 5/6



SECRET STITCH ALONG

PERMIN
Scandinavian art needlework



34-9699 / Part 3 No. 6/6

